

Clearances

"A"
Horizontal distance to adjacent surface
100mm if smooth, 325mm if irregular

Anchor

Horizontal & Vertical 2 minimum (see installation information) for further details of substrate requirements and type

Platform floor finish

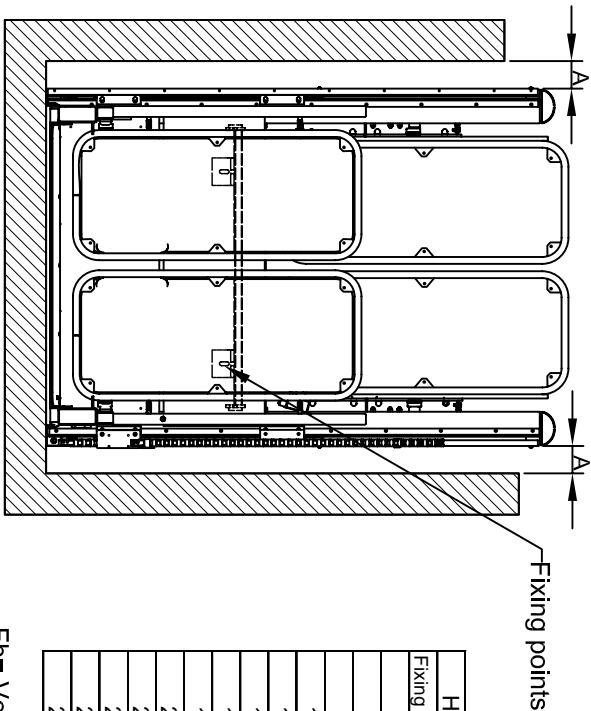
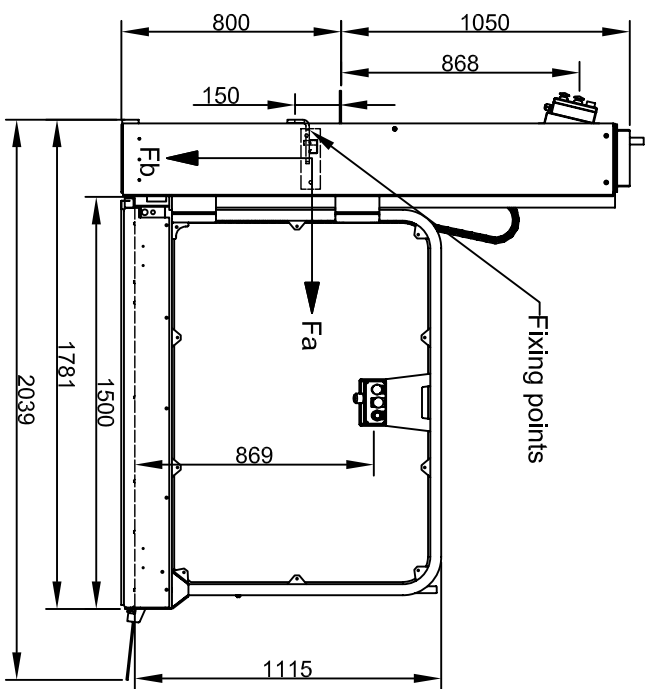
Standard - Aluminium chequer plate
Option - Altro walking 20

Electrical supply (Main switch)

1ph L, N, PE, 3x2,5mm² 16A

Technical Data

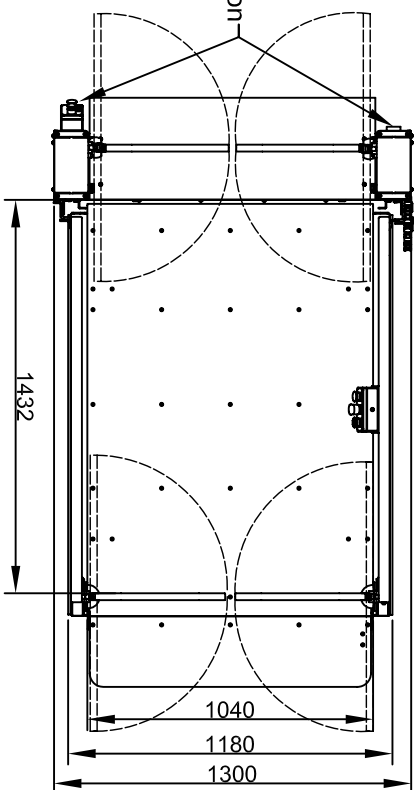
Rated capacity: 300kg / 2 person
Speed: 0,08m / s
Drive: 2,5kW Electrical motor / Belt drive
Electrical Connection: Single phase, 3x2,5mm²
Control voltage: 24V/olts
Soft start / Stop by frequency inverter
Drive system: Screw / Nut, double



HORIZONTAL FORCES	
Fixing height mm	Total Anchor Force Fa, kN
400	21,5
600	17
800	14,5
1000	11,0
1200	8,5
1400	7,5
1600	6,5
1800	5,5
2000	4,5
2200	4
2400	3,5
2600	3,25
2800	3,0

Fb= Vertical force of 10kN, spread over area of 1300mm x 250mm

Alternative location of control box



Ant.	Varunummer:	Namn:	Material: Ref.
Mått uten toleranser enligt SS - ISO 2768 - m			
Datum	Ändringar		
Titel: MPPR			AVÅKEN 1 ARL ÖV
STRATEGOS III			SWEDEN
STANDARD			TEL: +46 40437075
			FAX: +46 40432444
			http://www.mppr.se
Skala:			
Sign.			
Datum:			
Ritnings nr:			
3102			