

Clearances

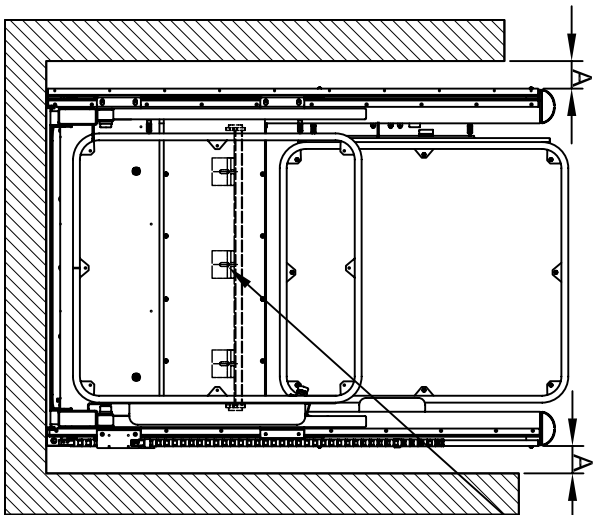
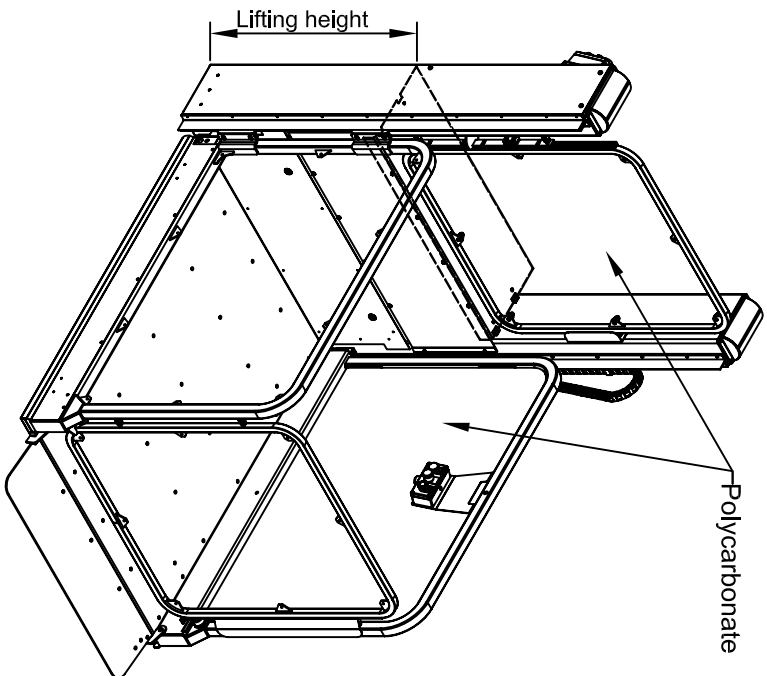
"A"
Horizontal distance to adjacent surface
100mm if smooth, 325mm if irregular

Anchors
Horizontal & Vertical 2 minimum (see installation information) for further details of substrate requirements and type

Platform floor finish
Standard - Aluminium chequer plate
Option - Altro walking 20

Electrical supply (Main switch)
1ph L, N, PE, 3x2,5mm² 16A

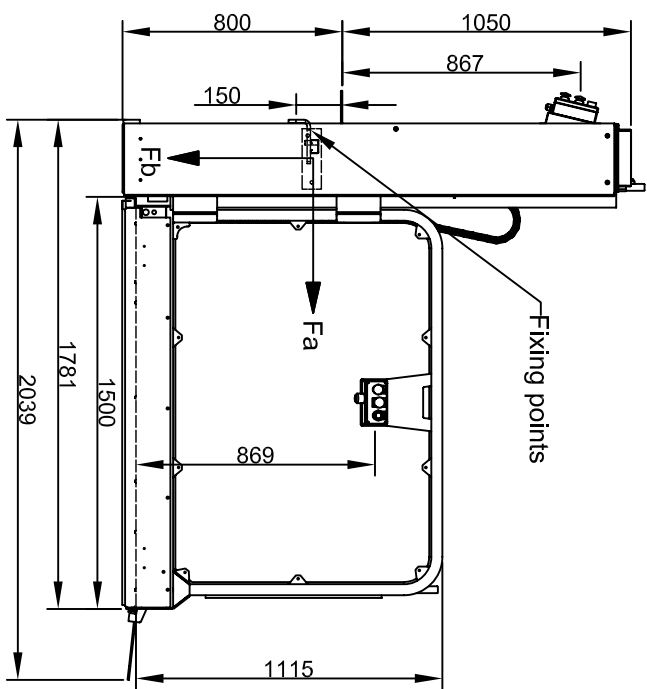
Technical Data
Rated capacity: 300kg / 2 person
Speed: 0,08m / s
Drive: 2,5kW Electrical motor / Belt drive
Electrical Connection: Single phase, 3x2,5mm²
Control voltage: 24 Volts
Soft start / Stop by frequency inverter
Drive system: Screw / Nut, dubble



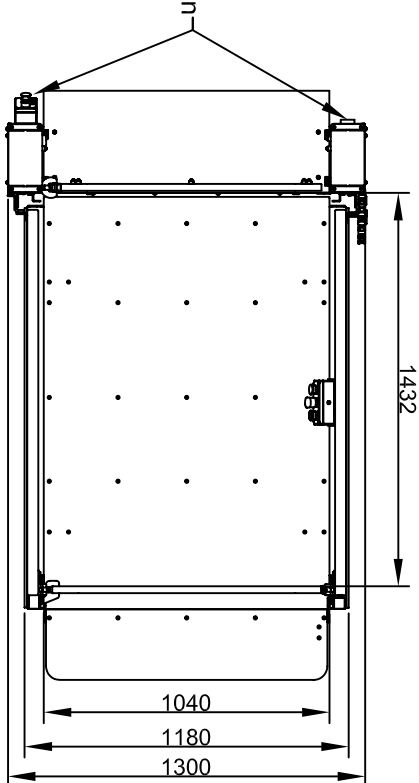
Fixing points

HORIZONTAL FORCES	
Fixing height mm	Total Anchor Force Fa, kN
400	21,5
600	17
800	14,5
1000	11,0
1200	8,5
1400	7,5
1600	6,5
1800	5,5
2000	4,5
2200	4
2400	3,5
2600	3,25
2800	3,0

Fb= Vertical force of 10kN, spread over area of 1300mm x 250mm



Alternative location of control box



Ant.	Varunummer:	Namn:	
Mått uten toleranser enligt SS - ISO 2768 - m			Material: Ref.
Datum	Ändringar		
Titel:			Scale
STRATEGOS III			Sign.
AUTOMATIC DOOR			Datum:
800mm			12.03.14
Lytthjöd: 800mm			Ritning nr:
Hissstyv: B4HSS			3120
AVÅGEN 1 A.L. O.V.			
MPPR SWEDEN			
TEL: +46 40437075			
FAX: +46 40432444			
http://www.mppr.se			